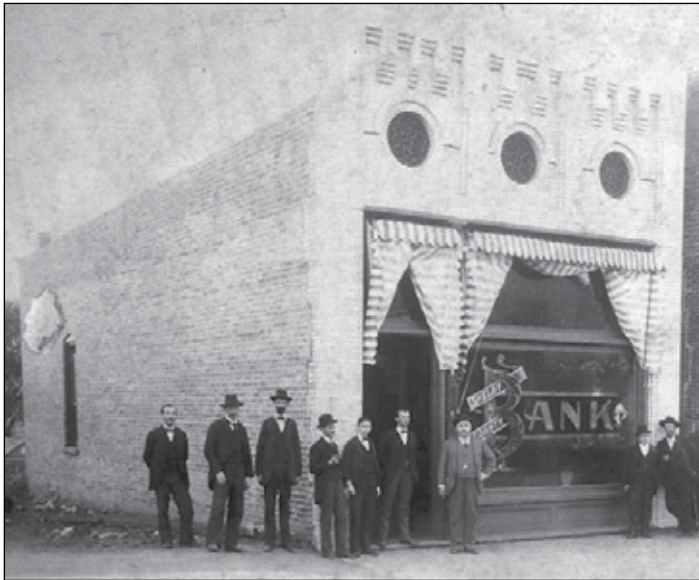


MONTEVALLO  
**Main Street**  
*Memories*

**Merchants & Planters Bank**

by Clay Nordan  
 Montevallo Historical Society



THE SHELBY COUNTY BANK ON MAIN STREET – CIRCA 1896

In 2018, the old Merchants & Planters Bank building became Montevallo's source for a different kind of "dough" when La Conchita Bakery and Pastry moved in, giving the town its first bakery since the old Montevallo Cafe and Bakery was a going concern on Middle Street in the 1940's. Before the arrival of the bakery on Main Street, the bank building had been most recently occupied by Bob Butterworth's State Farm Insurance agency. Prior to Butterworth's tenure in the space, the building was owned by the Weston/Mixon partnership and Bill Weston ran the State Farm agency that Butterworth later took over.

There has been a bank in this space going back to before 1900. The Shelby County Bank, which is pictured here, was advertising in the Montevallo News in 1896. Its successor in the building, the Merchants and Planters Bank

**Merchants & Planters Bank**  
 OF MONTEVALLO, ALABAMA

---

DOES A GENERAL BANKING BUSINESS

---

YOUR ACCOUNT IS SOLICITED

---

OFFICERS

C. L. MERONEY . . . . . PRESIDENT  
 J. ALEX. MOORE . . . . . VICE-PRESIDENT  
 Wm. LYMAN . . . . . CASHIER

DIRECTORS

D. L. WILKINSON    J. H. McMATH    C. L. MERONEY  
 Wm. LYMAN    J. ALEX. MOORE    R. E. WOOLLEY

had an ad in the 1907 Alabama Girls Industrial School yearbook, the "Chiaroscuro". In the mid-20th century, Merchants and Planters was operated by J. P. Kelly. His wife served as cashier and their bank was the community's primary banking resource for many years. Their sons, Agee and Pat Kelly followed them as president and vice-president, respectively, and ran the bank for a number of years themselves. During their tenure at M&P the bank moved two blocks east when a new building was completed in the 1960's. That building is the location for Trustmark Bank today.



It is not known by this writer when the elegant brick and stone facade of the M&P building was added to the building, but a perceptive and informed observer could easily conclude that the architectural features that are still very evident and well maintained were probably inspired by the architectural boom going on a few blocks away on the Alabama College campus. Beginning in 1915, buildings such as Bloch Hall, Wills Hall, Ramsey Hall, Anna Irvin Dining Hall and Calkins Hall were constructed in rapid succession. The noted Birmingham architectural firm, Warren, Knight, and Davis produced the designs for these buildings, all with handsome Palladian windows showcasing a consistent style. The windows, stone, and brick used on Merchants and Planters are direct

echoes of the look being established on campus, so it would not be surprising to learn that Warren, Knight, and Davis were involved or their work at least served as an inspiration for this building on Main Street.

Significantly, architects employed by the City of Montevallo have continued the use of the Palladian style of window in the design of both the Parnell Library and the new City Hall building. As such, it has become something of a graphic icon for the community.

**Montevallo**  
**Historical Society**  
*Opening the Portals of Our Heritage*

**JOIN TODAY!**  
 Download Application at  
[www.historicmontevallo.org](http://www.historicmontevallo.org)  
 P.O. Box 411 • Montevallo, AL 35115  
[montevallo1817@gmail.com](mailto:montevallo1817@gmail.com)

MONTEVALLO MAIN STREET MEMORIES is adapted from the series, THROWBACK THURSDAY, a **Montevallo Historical Society** and **Montevallo Main Street** partnership started in 2018. Each installment revisits commercial and residential life on Main Street and in the downtown area in the early to mid-twentieth century. The series remains available online and may be viewed at [www.historicmontevallo.org](http://www.historicmontevallo.org) under "Local History".