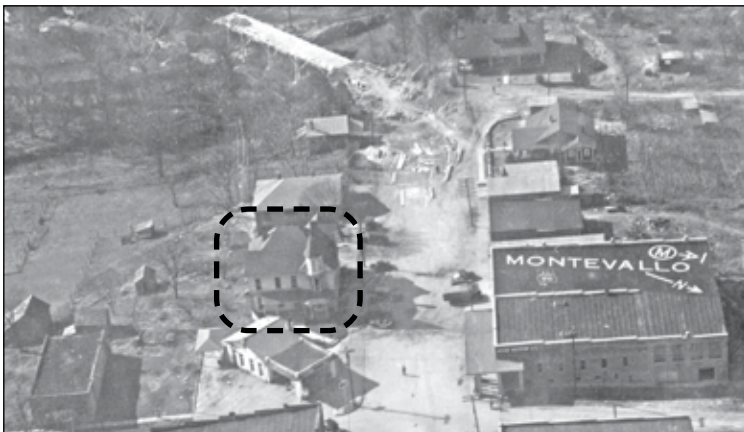


MONTEVALLO
Main Street
Memories

VICTORIAN HOMES

by Clay Nordan
 Vice-president, Montevallo Historical Society

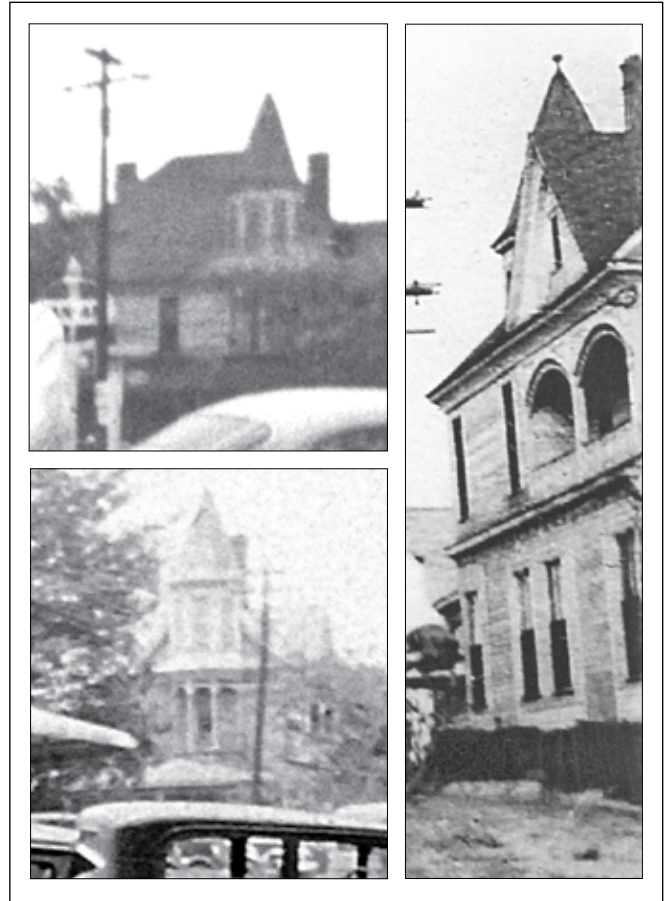
Well into the 1950's Montevallo had a number of large, two and three-story Victorian-style houses along Main Street as well as in the surrounding neighborhoods and on the college campus. Only a few remain in town for us to appreciate and admire today.



An aerial photo from 1934 over the intersection of Shelby and Main Streets shows where a two story Victorian home once stood. Just below the house at the corner was a Pan Am service station that continued to operate as an AMOCO / American station well into the 1970s.



The University of Montevallo now uses the restored "Queen Anne" style Peterson House on Middle Street for Administrative offices.



These grainy photos show a large Victorian house that stood on Main Street opposite today's City Hall. The house was torn down in the 1950's to make way for a used car lot for the Montevallo Motor Company dealership across the street.



The McKibbon house (still there on E. Boundary) is quite similar architecturally to the Victorian that was on Main Street.

Veterans Wreaths will be laid this year at Montevallo City Cemetery on December 16, 2023.
 Order your wreaths now for \$17 each at WWW.HISTORICMONTEVALLO.ORG



JOIN TODAY!
 Download Application at
www.historicmontevallo.org
 P.O. Box 411 • Montevallo, AL 35115
montevallo1817@gmail.com

MONTEVALLO MAIN STREET MEMORIES is adapted from the series, THROWBACK THURSDAY, a Montevallo Historical Society and Montevallo Main Street partnership started in 2018. Each installment revisits commercial and residential life on Main Street and in the downtown area in the early to mid-twentieth century. The series remains available online and may be viewed at www.historicmontevallo.org under "Local History".